

# Colortrac SmartLF Scanning Technology

- sharp, high definition images and true color fidelity
- choice of instant-on CCD or CIS for best fit to your application
- 'scan once' workflow
- affordable prices and exceptional value for the money



CCD 28" 1200 dpi optical 9600 dpi max GIGABIT network ready + USB 2.0 LED instant on

## SmartLF Gx+ 28

A1 / D-size Technical Imaging and Graphic Arts scanner. Includes SmartLF All-in-One software.



CIS 40" 600 dpi optical 9600 dpi max GIGABIT network ready + USB 2.0 LED instant on

## SmartLF Ci 40

A0 / E-size Technical Imaging scanner. Includes SmartLF All-in-One software.



CIS 40" 600 dpi optical 3600 dpi max USB 2.0 LED instant on

## SmartLF Cx 40

A0 / E-size Technical Imaging scanner. Includes SmartLF All-in-One software.



CCD 42" 1200 dpi optical 9600 dpi max GIGABIT network ready + USB 2.0 LED instant on

## SmartLF Gx+ 42

A0 / E-size Technical Imaging and Graphic Arts scanner. Includes SmartLF All-in-One software.



CCD 56" 600 dpi optical 9600 dpi max GIGABIT network ready + USB 2.0 LED instant on

## SmartLF Gx+ 56

World's Widest extra-wide Technical Imaging and Graphic Arts scanner. Includes SmartLF All-in-One software.

### Accessories



### Floor Stand

The floor stand positions the scanner at a comfortable and convenient height. PC and flat screen mounting kit is also available.



### Universal Repro Stand

The URS positions the scanner above most large format printers, minimizing the footprint of your workstation. It also holds a PC, flat screen and keyboard.



### Ci40 Carrying Case

The Ci40 carrying case has been developed to protect your Ci40 scanner during moves from job site to job site.

### Also available:

- Document Wallets
- Document Return Guides
- Scanner Cleaning Kit

SmartLF Scanner	Model	Image Sensors	Document Image Size	Color			Speed @ 200 dpi in/s			Resolution (dpi)		Connectivity		LCD Display	Media Thickness		Instant on, No warm up	Paper Feed	Application
				B & W	Grayscale	24-bit color	B & W	24-bit color	Optical	Enhanced	USB2	Gigabit Ethernet	Standard Model		T (Thick) model				
Gx + 28	M	4 x CCD	28" D-size+ A1+	✓	✓	✗	12	✗	1200	9600	✓	✓	✓	0.08" / 2mm	0.8" / 20mm	✓	Face Down	Technical Maps Photos Artwork	
	C					✓	12	1											
	E					✓	12	4											
Ci 40	M	5 x CIS	40" E-size+ A0+	✓	✓	✗	10	✗	600	9600	✓	✓	✓	0.012 / 3mm	✗	✓	Face Up	Technical Maps	
	C					✓	10	.83											
	E					✓	10	3.33											
Cx 40	M	5 x CIS	40" E-size+ A0+	✓	✓	✗	9	✗	600	3600	✓	✗	✓	0.08" / 2mm	✗	✓	Face Down	Technical Maps	
	C					✓	9	.75											
	E					✓	9	3											
Gx + 42	M	6 x CCD	42" E-size+ A0+	✓	✓	✗	12	✗	1200	9600	✓	✓	✓	0.08" / 2mm	0.8" / 20mm	✓	Face Down	Technical Maps Photos Artwork	
	C					✓	12	1											
	E					✓	12	4											
Gx + 56	M	8 x CCD	56" E-size+ / A0+ landscape	✓	✓	✗	10	✗	600	9600	✓	✓	✓	0.08" / 2mm	0.8" / 20mm	✓	Face Down	Technical Maps Photos Artwork	
	C					✓	10	1.5											
	E					✓	10	3											

# Colortrac Large Format Scanning Software

## SmartLF All-in-One



SmartLF All-in-One software is supplied with every SmartLF large format scanner. It provides non-specialist SmartLF scanner users with a quick and easy scan-to-file, scan-to-copy (print) and scan-to-pdf (email) capability.

### What SmartLF All-in-One does:

SmartLF software is designed to be simple to use while providing non-specialist SmartLF scanner users with all the scan-to-file, scan-to-copy and scan-to-PDF functionality they need. SmartLF software saves scanned documents as TIFF, JPG or PDF files and individually or in a batch, and makes copies of your technical documents to any Windows printer.

### What SmartLF All-in-One is for:

- AEC and CAD B/W and color drawings
- GIS B/W and color maps
- In-house graphics
- Data Capture

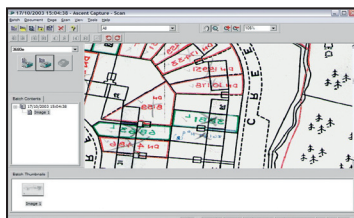
### SmartLF All-in-One features:

- Easy to understand and operate
- Copy to any Windows printer
- Save to JPG, PNG, TIFF and PDF
- Work in batch scan or copy modes
- Scanner START/STOP controls
- Makes non-specialists users productive

### Supported SmartLF scanners

SmartLF All-in-One software supports all Colortrac SmartLF large format scanners.

## SmartLF ISIS



ISIS is the industry standard scanner interface for electronic document capture (EDC). It is available free on request.

### What SmartLF ISIS software does:

Our unique SmartLF ISIS driver allows you to interface your SmartLF scanner directly with your EDC Software. It provides EDC users new to large-format scanning with a familiar ISIS software interface. Once installed, it connects directly with products like KOFAX Ascent and others. Settings are selected from familiar ISIS dialogue boxes. Scanned image data is placed directly into the application's work area in a similar way to a Twain driver.

### What SmartLF ISIS is for:

- Data Capture

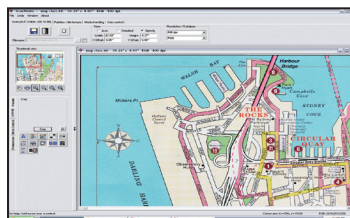
### SmartLF ISIS Software features

- Familiar ISIS interface
- Work with all major ISIS software
- ISIS guaranteed product quality
- ISIS support is unique to Colortrac
- Provides unique large format interface

### Supported SmartLF scanners

SmartLF ISIS software supports all Colortrac SmartLF large format scanners.

## ScanWorks



ScanWorks scan-to-file software is the large format scanning industry's most productive technical document and map scanning software.

### What ScanWorks does:

Its unique "scan once" technology boosts workflow by eliminating the needs for prescans and rescans. Just scan once, then edit the results in real time. No other scanning software makes professional scanning as fast and simple - and you so productive.

### What ScanWorks is for:

- AEC and CAD B/W and color drawings
- GIS B/W and color maps
- Data Capture

### ScanWorks features

- "Scan once, edit many" - no rescanning
- Fast, "on-the-fly" image editing
- Intelligent Adaptive Thresholding (IAT)
- Image restoration acclaimed "the best"
- Save to JPG, PNG, TIFF and PDF
- Work in batch scan or copy modes

### Supported SmartLF scanners

ScanWorks software supports all Colortrac SmartLF large format scanners.

## CopySmart



CopySmart scan-to-copy software makes really fast, highly accurate professional inkjet or LED color copies a quick and simple job.

### What CopySmart does:

CopySmart uses special internal plotter drivers and a file based TIFF driver for accurate copy size control, minimum paper wastage and minimum configuration effort. Printer data is routed via the printer's Windows connection and copying often begins just seconds after pressing Copy. CopySmart can be color calibrated (profiled) to any paper and ink by the customer in minutes using the supplied IT8 target and built-in calibration Wizard.

### What CopySmart is for:

- AEC and CAD B/W and color drawings
- GIS B/W and color maps
- In-house graphics
- Repro, Graphics and Quick Print

### CopySmart features

- Wizard assisted color calibration
- Wide range of supported printers
- TIFF driver for LED and RIPs
- Simple interface and controls
- Crop and copy directly from Preview
- Color profile any ink and media (IT8)
- Copy economically to any paper size

### Supported SmartLF scanners

CopySmart software supports all Colortrac SmartLF large format scanners.

**GEI WideFormat**

A Visual Edge Technology Company

www.geiwideformat.com

A World Of Wide Format Solutions.

3874 Highland Park NW • North Canton, OH 44720 • 800-842-8448